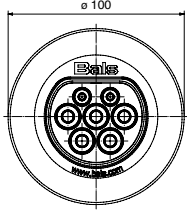



## Charging plug connectors in accordance with new standard

		Dimension drawing	Bals type no.	
	<p><b>Charging flush-mounted socket 32A</b></p> <ul style="list-style-type: none"> <li>• according to VDE-AR-E-2623-2-2</li> <li>• Square design</li> <li>• Flange 85 x 85 mm</li> <li>• Protection class IP54</li> <li>• Bore hole 70 x 70 mm</li> <li>• with crimped single cores 5 x 10 mm<sup>2</sup> + 2 x 0.5 mm<sup>2</sup></li> <li>• Single core length 1000 mm</li> </ul>		E-131-1000	
	<p><b>Charging flush-mounted socket 32A</b></p> <ul style="list-style-type: none"> <li>• according to VDE-AR-E-2623-2-2</li> <li>• Round design without flip-up lid</li> <li>• Flange Ø 100 mm</li> <li>• with crimped single cores 5 x 10 mm<sup>2</sup> + 2 x 0.5 mm<sup>2</sup></li> <li>• Single core length 1000 mm</li> </ul>		E-132-1000	
	<p><b>Charging flush-mounted socket 32A</b></p> <ul style="list-style-type: none"> <li>• according to VDE-AR-E-2623-2-2</li> <li>• Round design with flip-up lid</li> <li>• Flange Ø 100 mm</li> <li>• Protection class IP54</li> <li>• with crimped single cores 5 x 10 mm<sup>2</sup> + 2 x 0.5 mm<sup>2</sup></li> <li>• Single core length 1000 mm</li> </ul>		E-133-1000	
	<p><b>Charging flush-mounted socket 32A</b></p> <ul style="list-style-type: none"> <li>• according to VDE-AR-E-2623-2-2</li> <li>• Round design without flip-up lid and without cover</li> <li>• Three-point fixing for rear mounting</li> <li>• with crimped single cores 5 x 10 mm<sup>2</sup> + 2 x 0.5 mm<sup>2</sup></li> <li>• Single core length 1000 mm</li> </ul>		E-134-1000	
	<p><b>Electromechanical locking/ Actuator</b></p> <ul style="list-style-type: none"> <li>• for flush-mounted socket types E-131, E-132, E-133, E-134</li> <li>• compact design</li> </ul>		E-182	
	<p><b>Charging line 16A 1P + N + PE and PP + CP</b></p> <ul style="list-style-type: none"> <li>• 2 charging plugs according to VDE-AR-E-2623-2-2</li> <li>• Smooth cable design</li> <li>• a 680 ohm resistor in every plug connector</li> <li>• 4000 mm Lapp Kabel charge 3G 2.5 mm<sup>2</sup> + 2 x 0.5 mm<sup>2</sup></li> </ul>		E-82325G4000	
	<p><b>Charging line 16A 1P + N + PE and PP + CP</b></p> <ul style="list-style-type: none"> <li>• 2 charging plugs according to VDE-AR-E-2623-2-2</li> <li>• Spiral cable design, solid length 1500 mm</li> <li>• a 680 ohm resistor in every plug connector</li> <li>• 4000 mm Lapp Kabel charge 3G 2.5 mm<sup>2</sup> + 2 x 0.5 mm<sup>2</sup></li> </ul>		E-82325S4000	

# Charging plug connectors in accordance with new standard



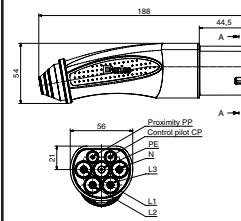
Dimension drawing

Bals type no.



**Charging line 16A 3P + N + PE and PP + CP**

- 2 charging plugs according to VDE-AR-E-2623-2-2
- Smooth cable design
- a 680 ohm resistor in every plug connector
- 4000 mm Lapp Kabel charge 5G 2.5 mm<sup>2</sup> + 2 x 0.5 mm<sup>2</sup>

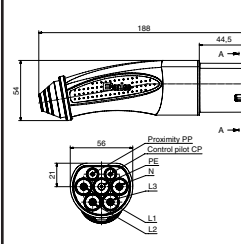


E-82525G4000



**Charging line 16A 3P + N + PE and PP + CP**

- 2 charging plugs according to VDE-AR-E-2623-2-2
- Spiral cable design, solid length 1500 mm
- a 680 ohm resistor in every plug connector
- 4000 mm Lapp Kabel charge 5G 2.5 mm<sup>2</sup> + 2 x 0.5 mm<sup>2</sup>

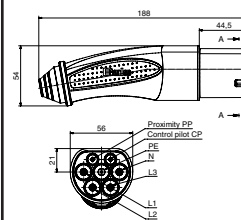


E-82525S4000



**Charging line 32A 3P + N + PE and PP + CP**

- 2 charging plugs according to VDE-AR-E-2623-2-2
- Smooth cable design
- a 220 ohm resistor in every plug connector
- 4000 mm Lapp Kabel charge 5G 6 mm<sup>2</sup> + 2 x 0.5 mm<sup>2</sup>

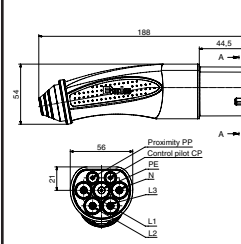


E-82560G4000



**Charging line 32A 3P + N + PE and PP + CP**

- 2 charging plugs according to VDE-AR-E-2623-2-2
- Spiral cable design, solid length 1500 mm
- a 220 ohm resistor in every plug connector
- 4000 mm Lapp Kabel charge 5G 6 mm<sup>2</sup> + 2 x 0.5 mm<sup>2</sup>

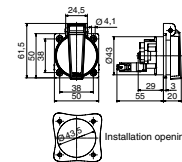


E-82560S4000



**Flush-mounted earthed socket 16A 230V**

- Protection class IP54
- Flange 50 x 50 mm
- Bore hole 38 x 38 mm
- with auxiliary „normally open“ contact

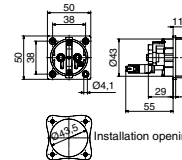


E-7184



**Flush-mounted earthed socket 16A 230V**

- without flip-up lid
- Flange 50 x 50 mm
- Bore hole 38 x 38 mm
- with auxiliary „normally open“ contact

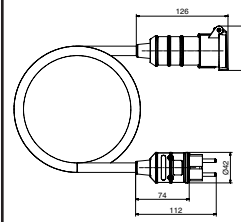


E-71070



**Charging line 16A 230V earthed contact**

- Earthed plug 16A 230V, with nickel-plated contacts
- Earthed contact coupling 16A 230V, with self-locking flip-up lid
- Smooth cable design
- 4000 mm Lapp ÖLFLEX® 540 P 3G 2.5

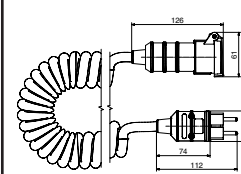


E-81645



**Charging line 16A 230V earthed contact**

- Earthed plug 16A 230V, with nickel-plated contacts
- Earthed contact coupling 16A 230V, with self-locking flip-up lid
- Spiral cable design
- 4000 mm Lapp ÖLFLEX® 540 P 3G 2.5



E-81646